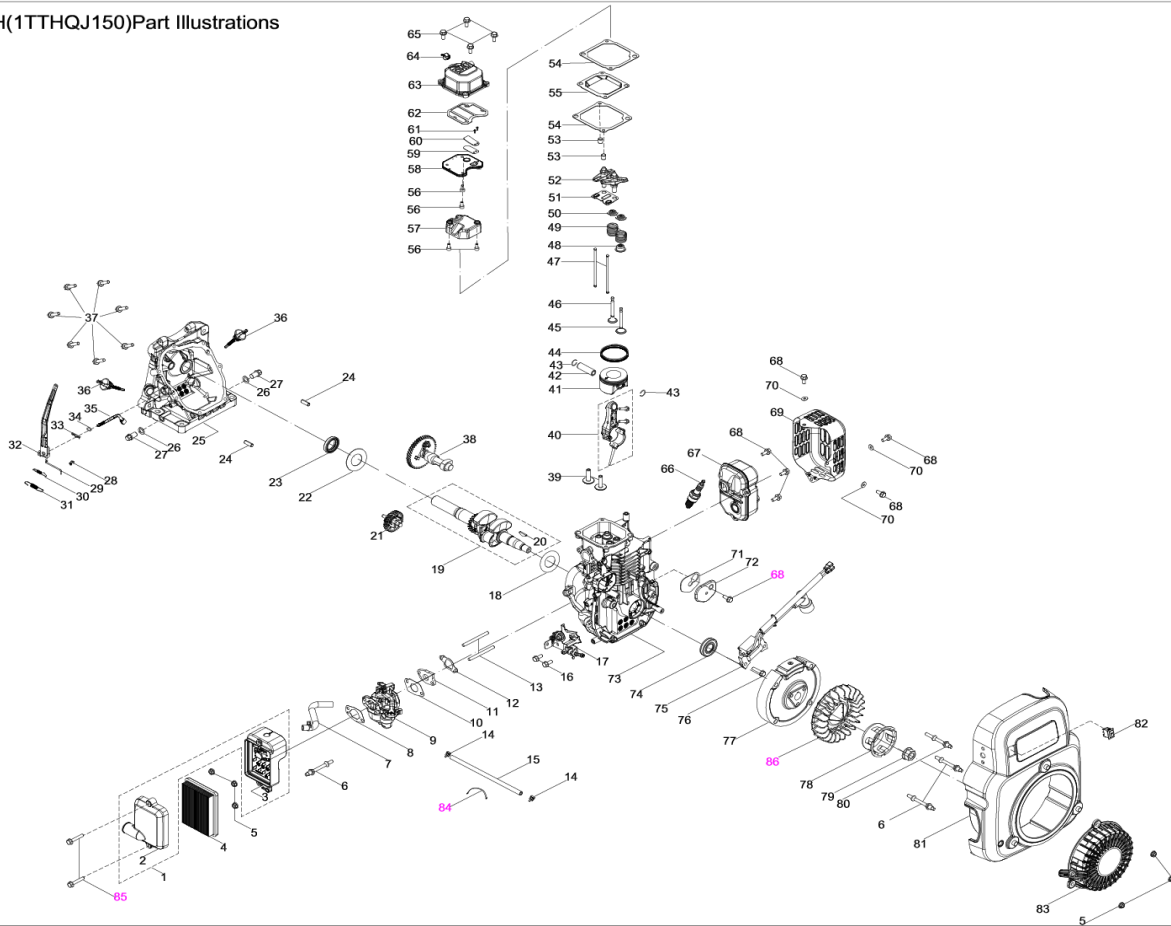


NH150H(1TTHQJ150)Part Illustrations



1 : 10

| NO | Parts Number | Name | Qty |
|----|----------------|---|-----|
| 1 | 100068201 | Air Filter Assembly | 1 |
| 2 | 100068198 | Air Filter Cover | 1 |
| 3 | 100071843 | Air Filter Base | 1 |
| 4 | 100030663 | Air Filter Element | 1 |
| 5 | 100011463-0002 | Nut, M6 | 6 |
| 6 | 100010306 | Stud, M6x75 | 3 |
| 7 | 100098523 | Breather Hose | 1 |
| 8 | 100096453 | Gasket, Air Filter | 1 |
| 9 | 100097471 | Carburetor | 1 |
| 10 | 100096452 | Gasket, Carburetor | 1 |
| 11 | 100096451 | Insulator | 1 |
| 12 | 100005551 | Gasket, Carburetor Insulator | 1 |
| 13 | 100010347 | Stud, M6x92 | 2 |
| 14 | 100005138 | Clamp | 2 |
| 15 | 100075755 | Fuel Hose, $\phi 4 \times \phi 10 \times 350$ | 1 |
| 16 | 100011571-0001 | Bolt, M6x14 | 2 |
| 17 | 100076675 | Governor Gear Bracket Assembly | 1 |
| 18 | 100065553-0001 | Washer, $\phi 23.5 \times 1 \times \phi 35$ | 1 |
| 19 | 100085231 | Crankshaft | 1 |
| 20 | 100010577 | Woodruff Key | 1 |
| 21 | 100073115 | Governor Gear | 1 |
| 22 | 100010528-0001 | Washer, $\phi 25.4 \times 1 \times \phi 48$ | 1 |
| 23 | 100017617 | Oil Seal, $\phi 25 \times \phi 38 \times 7$ | 1 |

| | | | |
|----|----------------|---|---|
| 24 | 100010546 | Pin, $\phi 7 \times 20$ | 2 |
| 25 | 100068202 | Crankcase Cover | 1 |
| 26 | 100010459 | Washer, $\phi 10 \times 1.5 \times \phi 16$ | 2 |
| 27 | 100010272 | Earth Bolt | 2 |
| 28 | 100008454 | Choke Linkage Lock Clamp | 1 |
| 29 | 100096455 | Throttle Linkage | 1 |
| 30 | 100073186 | Idle Spring | 1 |
| 31 | 100074034 | Governor Spring | 1 |
| 32 | 100072937 | Governor Lever | 1 |
| 33 | 100007989 | Cotter Pin | 1 |
| 34 | 100017631 | Oil Seal, $\phi 8 \times \phi 14 \times 4$ | 1 |
| 35 | 100072936 | Governor Gear Shaft | 1 |
| 36 | 100004099-0001 | Dipstick | 2 |
| 37 | 100011273-0003 | Bolt, M6 \times 40 | 7 |
| 38 | 100063525 | Camshaft | 1 |
| 39 | 100004261 | Tappet | 2 |
| 40 | 100050909 | Connecting Rod Assembly | 1 |
| 41 | 100003066 | Piston | 1 |
| 42 | 100003118 | Piston Pin | 1 |
| 43 | 100003220 | Circlip | 2 |
| 44 | 100003235 | Piston Ring Set | 1 |
| 45 | 100004520 | Intake Valve | 1 |
| 46 | 100004543 | Exhaust Valve | 1 |
| 47 | 100050914 | Push Rod | 2 |
| 48 | 100004598 | Intake Valve Seal | 1 |
| 49 | 100004564 | Valve Spring | 2 |
| 50 | 100004579 | Valve Spring Seat | 2 |
| 51 | 100004467 | Rocker Arm Base | 1 |
| 52 | 100004421 | Rocker Arm Assembly | 2 |
| 53 | 100061339 | Pin, $\phi 9 \times 10$ | 2 |
| 54 | 100072939 | Gasket, Valve Cover | 2 |
| 55 | 100078272 | Down Valve Cover Oil Baffle | 1 |
| 56 | 100010831-0001 | Bolt, M5 \times 10 | 4 |
| 57 | 100078273 | Upper Valve Cover Oil Baffle | 1 |
| 58 | 100068210 | Valve Cover Inner Plate | 1 |
| 59 | 100068205 | Breather Valve | 1 |
| 60 | 100068203 | Breather Plate | 1 |
| 61 | 100031810-0002 | Screw, M3 \times 8 | 2 |
| 62 | 100068204 | Gasket Valve Cover | 1 |
| 63 | 100068207 | Valve Cover Assembly | 1 |
| 64 | 100004172-0001 | Oil Plug | 1 |
| 65 | 100011267-0003 | Bolt, M6 \times 22 | 4 |
| 66 | 100009383 | Spark Plug | 1 |
| 67 | 100082652 | Muffler | 1 |
| 68 | 100011262-0003 | Bolt, M6 \times 14 | 7 |
| 69 | 100081569 | Muffler Guard | 1 |
| 70 | 100010898-0004 | Washer, $\phi 6$ | 3 |
| 71 | 100010256 | Gasket, Oil Filter | 1 |
| 72 | 100004049 | Breather Cover | 1 |
| 73 | 100067575 | Crankcase | 1 |
| 74 | 100017639 | Oil Seal, $\phi 20 \times \phi 42 \times 7$ | 1 |
| 75 | 100072273 | Ignition Module | 1 |
| 76 | 100011268-0003 | Bolt, M6 \times 25 | 1 |
| 77 | 100009500 | Flywheel | 1 |
| 78 | 100007557 | Starter Cup | 1 |

| | | | |
|----|----------------|----------------|---|
| 79 | 100011462-0001 | Nut, M14x1.5 | 1 |
| 80 | 100010307 | Stud, M6x73 | 1 |
| 81 | 100055569-0001 | Blower Housing | 1 |
| 82 | 100009159 | Stop Switch | 1 |
| 83 | 100084018-0001 | Recoil Starter | 1 |
| 84 | 100000568-0002 | Tape, L=150mm | 1 |
| 85 | 100010966-0002 | Screw, M6x30 | 2 |
| 86 | 100086448 | Cooling Fan | 1 |

